



Zdravotně
sociální fakulta
Faculty of Health
and Social Sciences

Jihočeská univerzita
v Českých Budějovicích
University of South Bohemia
in České Budějovice

WELCOME GUIDE

2022/2023



Content:

| | |
|---|----|
| COVID-19..... | 3 |
| ARRIVAL IN ČESKÉ BUDĚJOVICE | 3 |
| FROM THE RAILWAY STATION TO THE DORMITORY..... | 5 |
| PUBLIC TRANSPORT IN ČESKÉ BUDĚJOVICE | 7 |
| CURRENCY | 7 |
| <i>How to exchange money?</i> | 7 |
| WORKING HOURS | 7 |
| PUBLIC HOLIDAYS | 8 |
| <i>Important days</i> | 8 |
| PHONE IN THE CZECH REPUBLIC | 8 |
| <i>Important telephone numbers and addresses</i> | 9 |
| INSURANCE | 9 |
| MEDICAL AID..... | 10 |
| ERASMUS STUDENT NETWORK USB BUDWEIS (ESN USB) | 11 |
| <i>Mentors / Buddy system</i> | 11 |
| USE OF COMPUTERS/INTERNET..... | 11 |
| ACCOMMODATION | 12 |
| USB IDENTIFICATION CARDS | 13 |
| <i>Standard Card of the University of South Bohemia (student)</i> | 13 |
| <i>International ISIC student identification card</i> | 13 |
| CATERING..... | 14 |
| COSTS OF LIVING | 14 |
| PRACTICAL TRAINING..... | 14 |
| <i>Insurance</i> | 14 |
| <i>Vaccination and medical requirements</i> | 15 |
| ACADEMIC YEAR 2021/2022 | 15 |
| GRADING SYSTEM..... | 15 |
| <i>Local grading scale:</i> | 15 |
| STRUCTURE OF HIGHER EDUCATION IN CZECH REPUBLIC..... | 16 |
| USEFUL AND INTERESTING WEB-PAGES | 18 |
| FREE TIME..... | 18 |

CONTACT PERSON:

International Office:

Jana Redinova
Faculty Erasmus+ Coordinator
Address: International Office
Faculty of Health and Social Sciences (FHSS)
University of South Bohemia (USB)
J. Boreckeho 1167/27
370 11 České Budějovice
Czech Republic
Tel: +420 389 037 517
E-mail: zahr@zsf.jcu.cz



COVID-19

Important information regarding covid-19 measures for people coming to the Czech Republic
It is necessary to find the updated information at the following web links:

- [RULES FOR ENTRY AND RETURN TO THE CZECHIA – OFFICIAL WEBPAGE](#)
- [INFORMATION ABOUT THE CORONAVIRUS OUTBREAK AND THE RESTRICTIONS AT USB](#)

ARRIVAL IN ČESKÉ BUDĚJOVICE

Bus Lines:

- **119:** Prague Airport – takes you to „Nádraží Veleslavín“ (metro line A) - **15 min**
- **100:** Prague Airport – takes you to „Zličín“ (metro line B) - **18 min**

Airport express: Prague Airport - **Prague Main Railway Station** (metro line C and connection to SC, EC, IC and EN trains) - The bus line operates daily from 5:30 am till 10:00 pm in an interval of 15-30 minutes. The journey takes 33 minutes. You buy the ticket directly from the driver. The cost is 60 CZK (**Attention:** usual Prague Public Transport tickets cannot be used in the AE buses). Your Luggage is free of charge. *Follow this sign board*



Tickets

[Where to buy tickets](#)

Short-term tickets for Prague (from 30 minutes to 3 days) can be purchased in following ways:
Tickets are valid on metro, tram, bus, ferry and train lines in the area of Prague.

- In information centers and selling points at most of the metro stations
- In yellow ticket vending machines at metro stations and some surface transit stops
- In newspaper shops in the whole area of Prague
- In the mobile application PID Lítačka (paid by credit/debit card, Masterpass or Apple Pay, ticket needs to be activated before your travel)
- Inside every tram (only by contactless credit/debit card)

Correct usage of tickets

Are you travelling for the first time? Don't forget how to validate your ticket

Already purchased ticket must be validated in a yellow machine called "validator", otherwise the ticket is invalid and the passenger is treated as if he had no ticket. Validators are placed at entrances to stations of metro or funicular, at train platforms and in every tram and bus. Since the moment of validation the ticket is valid for its designated time. **Each ticket must be validated only once; when changing between lines or individual means, do not validate the ticket again.**



Avoid the Penalty!

Bus stop:

Terminal 1

Terminal 2 – in front of the Arrival hall

Public Transport Ticket Sale

Public Transport counters in Arrival Halls of Terminals 1 & 2 (from 7 am to 10 pm),

Automats placed at bus stops (cash required),

From a bus driver (cash required).

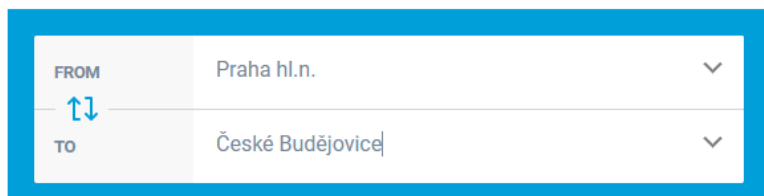
[Actual public transportation information](#)

[Public transportation fares](#)

[Prague Main Railway Station](#)

At the Railway station, you get to the ticket office, where you buy a single ticket to České Budějovice (price 189 - 220 CZK). The journey should not take longer than 3 hours. You can search the train timetable to "České Budějovice" [HERE](#).

Connections and tickets



Note: This is what much be filled in the Connection search

Before you arrive to Czech Republic you will be contacted by Buddy (student of the University of South Bohemia, who will help you at the beginning of your stay – see the chapter International Student Club – before your arrival, do inform your buddy about the time of your arrival to České Budějovice. **Your buddy will help you to get you to your dormitory after your arrival.**

Travel around České Budějovice by public transport

Tickets

Where to buy tickets?

Short-term tickets can be purchased in following ways:

- In information centers and selling points
- In yellow ticket vending machines
- In newspaper shops

Correct usage of tickets



Are you travelling for the first time?

Already purchased ticket must be validated in a yellow machine called “validator”, otherwise the ticket is invalid and the passenger is treated as if he had no ticket. Validators are placed in every trolleybus and bus. Since the moment of validation the ticket is valid for its designated time. **Each ticket must be validated only once; when changing between lines or individual means, do not validate the ticket again.**

Bus/trolley stop



- At each bus/trolley stop there is an informative panel.
- Under the top of the panel there are numbers of bus/trolley lines.
- Underneath there is a screen showing time remaining to arrival of forthcoming bus/trolley and its terminal station.
- And under the screen there are schedules of bus/trolley lines.



Bus/trolley lines schedules

- In the top left corner, there is the number of bus/trolley line.
- In the first column, there is the list of bus/trolley stops. The bus/trolley stop you are standing at is **highlighted**.

Next three columns illustrate times of arrivals.

- In the second column, there are times of arrival of the bus/trolley on working days.
- In the third column, there are times of arrival of the bus/trolley on working days during school holidays.
- In the fourth column, there are times of arrival of the bus/trolley on weekends and public holidays.

5

Platnost:

od 10.12.2017

Republika česká
Ministerstvo školství, mládeže a tělovýchovy
Informace o výstavbě

IDS
informatics

Integrovaný systém výstavby
Jihomoravský kraj

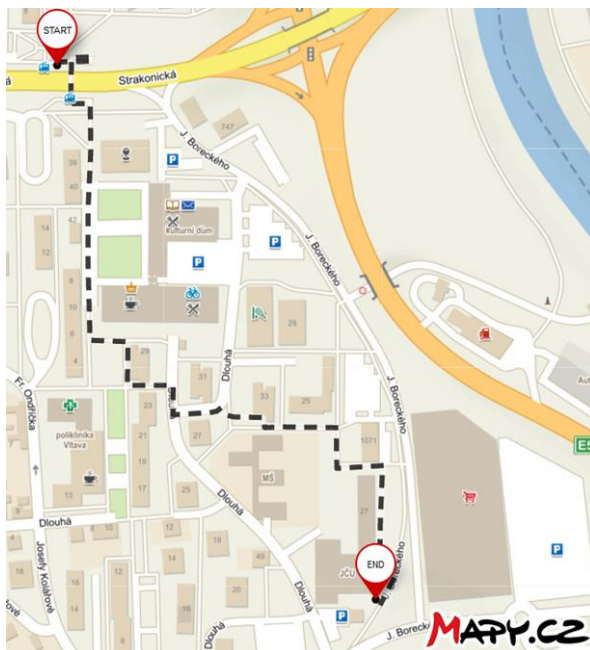
| ROZMĚRNÝ ZÁKRES | | Pracovní den | | Pracovní den Prázdinný | | Soboty Neděle, svátky | |
|-----------------|-----|--------------|-----|---------------------------|-----|--------------------------|-----|
| | 03 | | 03 | | 03 | | 03 |
| | 04 | | 04 | | 04 | | 04 |
| | 05 | | 05 | | 05 | | 05 |
| | 06 | | 06 | | 06 | | 06 |
| | 07 | | 07 | | 07 | | 07 |
| | 08 | | 08 | | 08 | | 08 |
| | 09 | | 09 | | 09 | | 09 |
| | 10 | | 10 | | 10 | | 10 |
| | 11 | | 11 | | 11 | | 11 |
| | 12 | | 12 | | 12 | | 12 |
| | 13 | | 13 | | 13 | | 13 |
| | 14 | | 14 | | 14 | | 14 |
| | 15 | | 15 | | 15 | | 15 |
| | 16 | | 16 | | 16 | | 16 |
| | 17 | | 17 | | 17 | | 17 |
| | 18 | | 18 | | 18 | | 18 |
| | 19 | | 19 | | 19 | | 19 |
| | 20 | | 20 | | 20 | | 20 |
| | 21 | | 21 | | 21 | | 21 |
| | 22 | | 22 | | 22 | | 22 |
| | 23 | | 23 | | 23 | | 23 |
| | 24 | | 24 | | 24 | | 24 |
| | 25 | | 25 | | 25 | | 25 |
| | 26 | | 26 | | 26 | | 26 |
| | 27 | | 27 | | 27 | | 27 |
| | 28 | | 28 | | 28 | | 28 |
| | 29 | | 29 | | 29 | | 29 |
| | 30 | | 30 | | 30 | | 30 |
| | 31 | | 31 | | 31 | | 31 |
| | 32 | | 32 | | 32 | | 32 |
| | 33 | | 33 | | 33 | | 33 |
| | 34 | | 34 | | 34 | | 34 |
| | 35 | | 35 | | 35 | | 35 |
| | 36 | | 36 | | 36 | | 36 |
| | 37 | | 37 | | 37 | | 37 |
| | 38 | | 38 | | 38 | | 38 |
| | 39 | | 39 | | 39 | | 39 |
| | 40 | | 40 | | 40 | | 40 |
| | 41 | | 41 | | 41 | | 41 |
| | 42 | | 42 | | 42 | | 42 |
| | 43 | | 43 | | 43 | | 43 |
| | 44 | | 44 | | 44 | | 44 |
| | 45 | | 45 | | 45 | | 45 |
| | 46 | | 46 | | 46 | | 46 |
| | 47 | | 47 | | 47 | | 47 |
| | 48 | | 48 | | 48 | | 48 |
| | 49 | | 49 | | 49 | | 49 |
| | 50 | | 50 | | 50 | | 50 |
| | 51 | | 51 | | 51 | | 51 |
| | 52 | | 52 | | 52 | | 52 |
| | 53 | | 53 | | 53 | | 53 |
| | 54 | | 54 | | 54 | | 54 |
| | 55 | | 55 | | 55 | | 55 |
| | 56 | | 56 | | 56 | | 56 |
| | 57 | | 57 | | 57 | | 57 |
| | 58 | | 58 | | 58 | | 58 |
| | 59 | | 59 | | 59 | | 59 |
| | 60 | | 60 | | 60 | | 60 |
| | 61 | | 61 | | 61 | | 61 |
| | 62 | | 62 | | 62 | | 62 |
| | 63 | | 63 | | 63 | | 63 |
| | 64 | | 64 | | 64 | | 64 |
| | 65 | | 65 | | 65 | | 65 |
| | 66 | | 66 | | 66 | | 66 |
| | 67 | | 67 | | 67 | | 67 |
| | 68 | | 68 | | 68 | | 68 |
| | 69 | | 69 | | 69 | | 69 |
| | 70 | | 70 | | 70 | | 70 |
| | 71 | | 71 | | 71 | | 71 |
| | 72 | | 72 | | 72 | | 72 |
| | 73 | | 73 | | 73 | | 73 |
| | 74 | | 74 | | 74 | | 74 |
| | 75 | | 75 | | 75 | | 75 |
| | 76 | | 76 | | 76 | | 76 |
| | 77 | | 77 | | 77 | | 77 |
| | 78 | | 78 | | 78 | | 78 |
| | 79 | | 79 | | 79 | | 79 |
| | 80 | | 80 | | 80 | | 80 |
| | 81 | | 81 | | 81 | | 81 |
| | 82 | | 82 | | 82 | | 82 |
| | 83 | | 83 | | 83 | | 83 |
| | 84 | | 84 | | 84 | | 84 |
| | 85 | | 85 | | 85 | | 85 |
| | 86 | | 86 | | 86 | | 86 |
| | 87 | | 87 | | 87 | | 87 |
| | 88 | | 88 | | 88 | | 88 |
| | 89 | | 89 | | 89 | | 89 |
| | 90 | | 90 | | 90 | | 90 |
| | 91 | | 91 | | 91 | | 91 |
| | 92 | | 92 | | 92 | | 92 |
| | 93 | | 93 | | 93 | | 93 |
| | 94 | | 94 | | 94 | | 94 |
| | 95 | | 95 | | 95 | | 95 |
| | 96 | | 96 | | 96 | | 96 |
| | 97 | | 97 | | 97 | | 97 |
| | 98 | | 98 | | 98 | | 98 |
| | 99 | | 99 | | 99 | | 99 |
| | 100 | | 100 | | 100 | | 100 |
| | 101 | | 101 | | 101 | | 101 |
| | 102 | | 102 | | 102 | | 102 |
| | 103 | | 103 | | 103 | | 103 |
| | 104 | | 104 | | 104 | | 104 |
| | 105 | | 105 | | 105 | | 105 |
| | 106 | | 106 | | 106 | | 106 |
| | 107 | | 107 | | 107 | | 107 |
| | 108 | | 108 | | 108 | | 108 |
| | 109 | | 109 | | 109 | | 109 |
| | 110 | | 110 | | 110 | | 110 |
| | 111 | | 111 | | 111 | | 111 |
| | 112 | | 112 | | 112 | | 112 |
| | 113 | | 113 | | 113 | | 113 |
| | 114 | | 114 | | 114 | | 114 |
| | 115 | | 115 | | 115 | | 115 |
| | 116 | | 116 | | 116 | | 116 |
| | 117 | | 117 | | 117 | | 117 |
| | 118 | | 118 | | 118 | | 118 |
| | 119 | | 119 | | 119 | | 119 |
| | 120 | | 120 | | 120 | | 120 |
| | 121 | | 121 | | 121 | | 121 |
| | 122 | | 122 | | 122 | | 122 |
| | 123 | | 123 | | 123 | | 123 |
| | 124 | | 124 | | 124 | | 124 |
| | 125 | | 125 | | 125 | | 125 |
| | 126 | | 126 | | 126 | | 126 |
| | 127 | | 127 | | 127 | | 127 |
| | 128 | | 128 | | 128 | | 128 |
| | 129 | | 129 | | 129 | | 129 |
| | 130 | | 130 | | 130 | | 130 |
| | 131 | | 131 | | 131 | | 131 |
| | 132 | | 132 | | 132 | | 132 |
| | 133 | | 133 | | 133 | | 133 |
| | 134 | | 134 | | 134 | | 134 |
| | 135 | | 135 | | 135 | | 135 |
| | 136 | | 136 | | 136 | | 136 |
| | 137 | | 137 | | 137 | | 137 |
| | 138 | | 138 | | 138 | | 138 |
| | 139 | | 139 | | 139 | | 139 |
| | 140 | | 140 | | 140 | | 140 |
| | 141 | | 141 | | 141 | | 141 |
| | 142 | | 142 | | 142 | | 142 |
| | 143 | | 143 | | 143 | | 143 |
| | 144 | | 144 | | 144 | | 144 |
| | 145 | | 145 | | 145 | | 145 |
| | 146 | | 146 | | 146 | | 146 |
| | 147 | | 147 | | 147 | | 147 |
| | 148 | | 148 | | 148 | | 148 |
| | 149 | | 149 | | 149 | | 149 |
| | 150 | | 150 | | 150 | | 150 |
| | 151 | | 151 | | 151 | | 151 |
| | 152 | | 152 | | 152 | | 152 |
| | 153 | | 153 | | 153 | | 153 |
| | 154 | | 154 | | 154 | | 154 |
| | 155 | | 155 | | 155 | | 155 |
| | 156 | | 156 | | 156 | | 156 |
| | 157 | | 157 | | 157 | | 157 |
| | 158 | | 158 | | 158 | | 158 |
| | 159 | | 159 | | 159 | | 159 |
| | 160 | | 160 | | 160 | | 160 |
| | 161 | | 161 | | 161 | | 161 |
| | 162 | | 162 | | 162 | | 162 |
| | 163 | | 163 | | 163 | | 163 |
| | 164 | | 164 | | 164 | | 164 |
| | 165 | | 165 | | 165 | | 165 |
| | 166 | | 166 | | 166 | | 166 |
| | 167 | | 167 | | 167 | | 167 |
| | 168 | | 168 | | 168 | | 168 |
| | 169 | | 169 | | 169 | | 169 |
| | 170 | | 170 | | 170 | | 170 |
| | 171 | | 171 | | 171 | | 171 |
| | 172 | | 172 | | 172 | | 172 |
| | 173 | | 173 | | 173 | | 173 |
| | 174 | | 174 | | 174 | | 174 |
| | 175 | | 175 | | 175 | | 175 |
| | 176 | | 176 | | 176 | | 176 |
| | 177 | | 177 | | 177 | | 177 |
| | 178 | | 178 | | 178 | | 178 |
| | 179 | | 179 | | 179 | | 179 |
| | 180 | | 180 | | 180 | | 180 |
| | 181 | | 181 | | 181 | | 181 |
| | 182 | | 182 | | 182 | | 182 |
| | 183 | | 183 | | 183 | | 183 |
| | 184 | | 184 | | 184 | | 184 |
| | 185 | | 185 | | 185 | | 185 |
| | 186 | | 186 | | 186 | | 186 |
| | 187 | | 187 | | 187 | | 187 |
| | 188 | | 188 | | 188 | | 188 |
| | 189 | | 189 | | 189 | | 189 |
| | 190 | | 190 | | 190 | | 190 |
| | 191 | | 191 | | 191 | | 191 |
| | 192 | | 192 | | 192 | | 192 |
| | 193 | | 193 | | 193 | | 193 |
| | 194 | | 194 | | 194 | | 194 |
| | 195 | | 195 | | 195 | | 195 |
| | 196 | | 196 | | 196 | | 196 |
| | 197 | | 197 | | 197 | | 197 |
| | 198 | | 198 | | 198 | | 198 |
| | 199 | | 199 | | 199 | | 199 |
| | 200 | | 200 | | 200 | | 200 |
| | 201 | | 201 | | 201 | | 201 |
| | 202 | | 202 | | 202 | | 202 |
| | 203 | | 203 | | 203 | | 203 |
| | 204 | | 204 | | 204 | | 204 |
| | 205 | | 205 | | 205 | | 205 |
| | 206 | | 206 | | 206 | | 206 |
| | 207 | | 207 | | 207 | | 207 |
| | 208 | | 208 | | 208 | | 208 |
| | 209 | | 209 | | 209 | | 209 |
| | 210 | | 210 | | 210 | | 210 |
| | 211 | | 211 | | 211 | | 211 |
| | 212 | | 212 | | 212 | | 212 |
| | 213 | | 213 | | 213 | | 213 |
| | 214 | | 214 | | 214 | | 214 |
| | 215 | | 215 | | 215 | | 215 |
| | 216 | | 216 | | 216 | | 216 |
| | 217 | | 217 | | 217 | | 217 |
| | 218 | | 218 | | 218 | | 218 |
| | 219 | | 219 | | 219 | | 219 |
| | 220 | | 220 | | 220 | | 220 |
| | 221 | | 221 | | 221 | | 221 |
| | 222 | | 222 | | 222 | | 222 |
| | 223 | | 223 | | 223 | | 223 |
| | 224 | | 224 | | 224 | | 224 |
| | 225 | | 225 | | 225 | | 225 |
| | 226 | | 226 | | 226 | | 226 |
| | 227 | | 227 | | 227 | | 227 |
| | 228 | | 228 | | 228 | | 228 |
| | 229 | | 229 | | 229 | | 229 |
| | | | | | | | |

Routes from train station and bus station to the faculty

The easiest way to get from the main railway station and from the bus station to the Dormitory K5 and as well as to the Faculty building is by public transport. At the bus/trolley stop “**Nádraží**” you can either

- take the trolley number **5** or **9** to the stop “**Vltava střed**” (**15 min ride**) or
- take the **bus/trolley number 1, 4, 5** to the stop “**Evžena Rošického**”(**14-18 min. ride**).

From both of those stops you can get to the Faculty on foot in less than ten minutes.



Route on foot from bus stop “**Vltava střed**” to the Faculty of Health and Social Sciences/Dormitory K5

(10 minutes)

Route on foot from bus stop “**Evžena Rošického**” to the Faculty of Health and Social Sciences/Dormitory K5

(6 minutes)



PUBLIC TRANSPORT IN ČESKÉ BUDĚJOVICE

Public Transport within České Budějovice - [fares](#):

- To get a ticket every time you use a public transport for 20 CZK/60 minutes
- To buy a month ticket costs from 210 CZK (for students younger than 26 years), a month adult's ticket 420 CZK, the charge can be higher depending on the number of zones you want to use Public Transport for
- To buy a three months ticket from 560 CZK (for students younger than 26 years) to 1 120 CZK for older students

You will be shown where the office is when you get to České Budějovice. To get a student ticket **you will need one photo (passport photo size)** and a confirmation from the International Office, that you are an International student studying at the University of South Bohemia. You will get the confirmation after your arrival within the first meeting at the international office. There is a charge of 50 CZK for the first ticket.

CURRENCY

In the Czech Republic, there are Czech Crowns (CZK) are used as an official currency

1 CZK = 100 Halers. Notes come in 5000, 2000, 1000, 500, 200 and 100 CZK denominations and coins in 50, 20, 10, 5, 2, and 1 CZK.

The Czech crown is freely convertible on world currency markets; exchange rates could be found [HERE](#).



How to exchange money?

- * **Banks** charge 2-3% commission for cash exchange; they are generally open Mon-Fri. 8 a.m. – 5 p.m. At any other time or on weekends you can use some exchange offices in the centre of Prague.
- * **Exchange offices** usually do not charge any commission. You can exchange your money at [Prague airport](#) or in České Budějovice.

WORKING HOURS

Visiting hours in most of Czech monuments are from 9 or 10 a.m. till 5 or 6 p.m. A number of museums, galleries and castles are closed on Mondays, so check ahead. If you visit a [castle](#), you have in mind, the beginning of the last tour is 1 hour or 1, 5 hours to the end of opening hours.

[The National Museum](#) is open daily from 10 a.m. to 6 p. m. [The Jewish Museum in Prague](#) is closed on Saturdays and on Jewish holidays. [The National Gallery](#) is open daily except Mondays from 10 a.m. to 6 p. m.

Shops in Prague are generally open Monday to Friday from 9 a.m. to 6 p.m. or later and from 9 a.m. to the noon on Saturday. Banks open from 8 a.m. to 5 or 6 p.m. Monday to Friday. Food stores are opened from 8 a.m. and many of them stay open till the evening on Saturdays. There are also some hypermarkets (for example Tesco) that are open non-stop. Many tourist shops in the centre are open daily till 7 p.m.

Czech Post



Post offices in Czech Republic are generally open between 8 a.m. and 6 p.m., on Saturdays between 8 a.m. and 12 a.m.

Cost of Stamps of standard letters and postcards:

- within Czech Republic from 19 CZK
- to European countries from 39 CZK
- to Non-European countries from 45 CZK

PUBLIC HOLIDAYS

State holidays

| | |
|--------------|---|
| 1 January | Independent Czech State |
| 8 May | Liberation Day |
| 5 July | Slavic Apostles St. Cyril and St. Methodius |
| 6 July | Burning of Jan Hus |
| 28 September | Czech Statehood Day |
| 28 October | Independent Czechoslovakia Day |
| 17 November | Fight for Freedom and Democracy |

Other holidays

| | |
|---------------------|----------------|
| 1 January | New Year's Day |
| 10 April – 13 April | Easter |
| 1 May | Labour Day |
| 24 December | Christmas Eve |
| 25 December | Christmas Day |
| 26 December | Boxing Day |

Important days

Important days for the Czech Republic are the 12 March (the day of the entry of Czech Republic to NATO) and the 5 May (Czech National Uprising in the end of World War II).

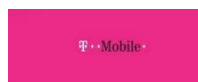
PHONE IN THE CZECH REPUBLIC

There are three operators of mobile phones in the Czech Republic:

- [O₂](#)



- **T-Mobile**



- [Vodafone](#)



If you intent to buy a SIM card **your cell phone needs to be unblocked**. A SIM card together with a starting prepaid credit costs between 200 – 2 000 CZK.

O2 Xcall – the cheapest means of phoning abroad

Xcall is a new service that enables you to phone abroad at the cheapest rates for selected countries. To use the Xcall services simply dial 970 00+ the country code without the zeros + the area code without the zeros + the phone number. For example, for calling to Germany: dial 970 00 + 49 (country code) + the phone number in Germany. For example: 970 00 + 49 + 978 654 321.

Important telephone numbers and addresses

| | | | |
|------|--|--------|--|
| 155 | Emergency services | 12 444 | Prague information service - general information about Prague |
| 158 | Police | 1180 | Telephone number information for Prague and the Czech Republic |
| 150 | Fire | 1181 | Information on telephone and fax numbers from abroad, services and rates for international dialling tel. |
| 156 | Metropolitan police | 1212 | Tourist in need |
| 112 | Single European emergency phone number | | |
| 1230 | Emergency breakdown services | | |

Country codes

| | | | |
|---------------|------|-----------------------|------|
| Austria | +43 | Norway | +47 |
| France | +33 | RSA | +27 |
| Finland | +358 | Slovakia | +421 |
| Germany | +49 | Spain | +34 |
| Great Britain | +44 | Sweden | +46 |
| Greece | +30 | Switzerland | +41 |
| Italy | +39 | USA | +1 |
| Netherlands | +31 | to the Czech Republic | +420 |

INSURANCE

Students from EU countries

Students from EU countries plus Iceland, Liechtenstein, Norway and Switzerland are entitled to the provision of necessary and urgent health care **free-of-charge**.

It is necessary to have a [European Health Insurance Card](#).

It is highly recommended to have a supplementary travel health insurance. It must be arranged by the student **before** the student leaves the country of origin.



Students from non - EU countries

Students from non-EU countries, staying in the Czech Republic **longer than 3 months**, have to contract an insurance with an insurance company, which is licensed to operate the insurance in the territory of the Czech Republic according to a special legal regulation, i.e.:

- National insurance companies and insurance companies from non-EU countries that were provided by the Czech National Bank with a license to carry on insurance business;

- Insurance companies from other EU countries, whose operations in the Czech Republic are based on the right to set up branch offices or are based on the freedom to provide services temporarily.

It is recommended to consult [the Czech Embassy or consulate](#) and verify whether the insurance meets the requirements for an application for a visa or residence permit for stays longer than 90 days.

Travel medical insurance must cover the cost of emergency medical care, including medical evacuation or, in the event of death, repatriation of remains to the country that has issued the applicant's travel document or to the applicant's country of residence. ***The insurance policy must not exclude coverage for injuries and damage caused by the applicant's intentional acts, injuries and damage caused by fault or contributory fault on the part of the applicant, and injuries and damage caused by the consumption of alcohol, narcotic and psychotropic substances by the applicant.*** The minimum coverage is **60 000 EUR** per one insured event without any coinsurance or co-payment.

Students from **Turkey, Croatia, Macedonia, Serbia and Montenegro** do not need to have that type of travel health insurance, but only need the **form E111** from their home insurance company.

Further information about the insurance could be found [HERE](#).

MEDICAL AID

With your health insurance, you are entitled to visit any general practitioner or dentist. If you have eye problems or any other problem, you should first visit a general practitioner, who will examine you and then, if necessary, arrange for you to see a specialist. Unless it is urgent, we recommend making an appointment in advance on the phone. Do not forget to take the **insurance card, number or any document proving your insurance.**

Emergency cases

If you are faced with an urgent need for medical attention at a time when doctors' offices are not open, you should go to the one of the followings emergency service:

- primary treatment of minor conditions

First Aid Medical Service (Nemocnice České Budějovice, a.s. - Hospital of České Budějovice)
- **Building G** access from the street Gen. Svobody

Phone: +420 386 355 555, emergency for adults: +420 387 878 001

MON-FRI 6.00 pm – 10.00 pm, SAT, SUN, public holidays: 9.00 am – 9.00 pm

- Emergency conditions, such as injuries, heart attacks, loss of consciousness, bleeding, etc., are primarily treated in the hospital

Hospital emergency service from 3.30 pm – 7.00 am in all departments that provide acute and inpatient care

- Dental emergency

First Aid Medical Service (Nemocnice České Budějovice, a.s.) - Building G access from the street Gen. Svobody

MON-FRI: 4.30 pm – 9.30 pm SAT, SUN, public holidays: 8.00 am – 6.00 pm.

Phone: +420 387 878 570

In case you need assistance, contact your "buddy" from the [ERASMUS STUDENT NETWORK USB](#).

ERASMUS STUDENT NETWORK USB BUDWEIS (ESN USB)

ESN USB is a team of students of the University of South Bohemia, who helps international students within the international programmes such as for example Erasmus to adapt in our country.



- ESN USB provides buddies for students from abroad, organizes student welcome/final parties, excursions to cultural treasures all over the Czech Republic, sports activities etc.
- The aim is to help international students with their arrival to the Czech Republic and mutual enriching of knowledge and experience with other people.
- Further information about the activities of ISC could be found [here](#)



Mentors / Buddy system

- Buddies = the university students who would like to help incoming students to adapt in our town and country. All of them are able to speak English. There are also students who speak German, Spanish, French, Russian, Polish or Italian.
- The main goal is to assist international students during their stay at the University of South Bohemia. Buddies are here for you, if you have any questions, if you need help with anything you can always count on him/her. They can help you with arrival to České Budějovice, accommodation, orientation around campus and in town, needed paperwork, translations... Usually Buddy will even pick you up at the train or bus station in České Budějovice (sometimes even at airport in Prague) and will show you the way to your faculty and accommodation. So do not worry, we will take care of you that you don't get lost.
- You can apply for your Buddy by filling the form [here](#).

USE OF COMPUTERS/INTERNET



All International students have an access to the computer within the University of South Bohemia. The access is enabled by using the guest identification card, which will be given to each international student at his/her arrival to České Budějovice. Within the student residences, there is a possibility to use the internet for a charge as there are internet connections at each room.

The University of South Bohemia is part of eduroam, world-wide roaming access service.

ACCOMMODATION

University dormitories

International students of the Faculty Health and Social Sciences are usually accommodated at the Dormitory K5. The building of K5 is connected to the main Faculty building. They can also sometimes be accommodated within the Campus at the students Residence.

There are 5 dormitories:

- Dormitories K1-K4 - street "Studentská"
- Dormitory K5 (called "URAN") – street "J. Boreckého"

Dormitories K1 – K4

Dormitories K1 – K4, are situated in the Campus of the University of South Bohemia in „Čtyři Dvory“(part of České Budějovice) in Studentská street. To get to the Campus by public transport you can use bus line Nr. 3, 7, 15, 53 to the station called: „**Vysokoškolské koleje**“ to get to K1, K2 and Menza (Student's Catering hall). If you want to get to K3, K4 or Bobik (University hostel), you will go by the same bus lines to the station: „**Jihočeská univerzita**“.

Description: Single or double bedrooms are fully furnished. There is a bathroom and toilet within 2 rooms. At each room, there is a possibility of internet connection. Common kitchens are located on each floor.

Amenities: fitness studios and other sport facilities

In 2020 the reconstruction of K4 started!

Dormitories K2 and K3

Description: There are double bedrooms. All rooms are fully furnished, with a refrigerator and a sink. In each room, there is a possibility of internet connection. All rooms have collective bathroom facilities and toilets; there are collective kitchens on each floor.

Dormitory K5

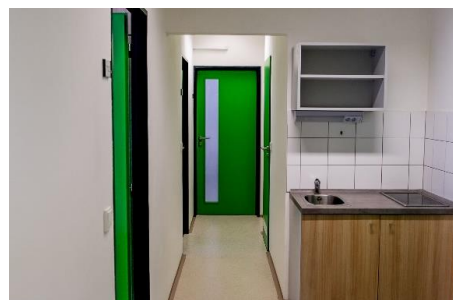
To get to K5 dormitory, which is situated on the border of „Vltava“ housing estate in J. Boreckého street you should take public transport lines Nr. **1, 5, 8, 9, 15, 18, 59** and get to the stations: "**Evžena Rošického**" or "**Vltava střed**"

Description: There are single, double and triple bedrooms. Each bedroom has its bathroom and toilet and is fully furnished with a possibility of internet connection. Common kitchens are located on each floor.

Important links to check:

[How to apply for an accommodation in Dorms of the USB?](#)

[Student Accommodation Code](#)



USB IDENTIFICATION CARDS

Short stay (*up to one month*)

Shortly after arriving to České Budějovice – international exchange students receive the University Identification Card that enables them the access to the lectures halls, internet classrooms, students' halls etc. situated in the campus. There is a required 150 CZK deposit to get the Identification card.

Long stay (*more than one month*)

Since 2003, when the **rector's decision on the APPLICATION AND IMPLEMENTATION OF THE SINGLE IDENTIFICATION AND ACCESS SYSTEM TO JU** entered into force, each new entrant student is required to apply for the **student's identification card**. It is a chip-free contact card, which enables its owner to enter the places protected by the access system and to use the university facilities (printing and copying, canteen, library).

Standard Card of the University of South Bohemia (student)

This is a chip card applicable only to the University of South Bohemia. Outside of the university, this card can't be used. This card is issued at the price of **80, - CZK** (80, - CZK of the card and print costs). Student needs to fill in the application form, pay the fee and enclose one passport photograph.

University Card Appearance:



International ISIC student identification card

It is a standard ID card that can be used as an international student identification card and can be used outside the university. This card is issued by the University in cooperation with the GTS ALIVE sro International License Provider. The card is valid for a maximum of 16 months. For more information about the use of the card and the possibilities of drawing discounts under the ISIC license. This card is issued in the price of **250, - CZK** (180, - CZK license + 70, - CZK part of card costs and printing) the price is valid for the first student card.

Card Appearance:



CATERING

Students' Cafeteria offers breakfast, lunch, packed lunch and dinner. Students can choose from 3 meals for lunch and 3 different meals for dinner every weekday. An electronic ordering system was built so the students can choose their meals for the next day via internet.

Students' Cafeteria is opened Monday – Friday:

| | | |
|--|---------------|---|
| Breakfast | 06:30 – 08:00 | 22 CZK |
| Lunch | 11:00 – 14:00 | (Main Cafeteria in the University Campus) |
| | 11:00 – 13:30 | (Students' Cafeteria in URAN – K5) |
| | | 18 - 45 CZK |
| Dinner | 17:30 – 19:00 | 30 CZK |
| Baguettes are available any time at the reception desk at the Dormitory - 14/19/22 CZK | | |

International students will be introduced to the system after their arrival. During the weekend students can either cook meals themselves or they can get meals in restaurants for average price of 150 CZK a lunch.

COSTS OF LIVING

Basic costs for food and accommodation are about 10 000 to 12 000 CZK per month

| | |
|---------------------|----------------------------|
| Accommodation | 2 500 - 3 750 CZK |
| Food | 6 500 CZK |
| Other expenses | 3 000 CZK |
| Basic costs: | 12 000 - 13 250 CZK |

PRACTICAL TRAINING

Insurance

Students who are ready to come for practical placement need to have an insurance including **Liability insurance**. This insurance covers the damage or bodily harm, and in the case of death and also damages that occurred during an insured trip, for which the insured party is legally responsible under the civil law of the state in whose territory the damage occurred. Before students start doing practice within the Faculty clinical sites (organisations), **students must have the liability insurance**. All incoming students chose one of the performance tariff and inform the Faculty Erasmus+ coordinator about their choice by e-mail. Each student pays the liability insurance in cash after arrival to the Faculty.

The annual premium amount is shown in the table below:

| Performance limit | Czech Republic |
|-------------------|----------------|
| CZK 1 000 000 | CZK 240 |
| CZK 2 500 000 | CZK 280 |
| CZK 5 000 000 | CZK 440 |

Besides the student's responsibility within the practical placement, the insurance also includes liability insurance in the ordinary citizen life of a student with an annual performance limit of CZK 100 000. The student is always insured for a period of one year from the date of commencement of the insurance.

This insurance covers the insured party's obligation to compensate:

- detriment caused to a third party during bodily harm and death;
- damage incurred by a third party through damage or destruction of property (property refers to a tangible item, meaning a controllable part of the external world, which has the nature of an independent object);
- other damages arising from detriment in the case of bodily harm or death and damage to property according to this clause (subsequent financial damage); caused by activities in ordinary civilian life in the pursuit of common tourist activities.

Vaccination and medical requirements

Students who are coming to do the **practical placement in the hospital** need to proof that they were vaccinated against **Hepatitis B**. Uniforms are not provided. Students need to bring their own white socks, white comfortable shoes with white shoe soles and a white T-shirts and white trousers!

The applicants for a practical placement in hospital needs to have a proof of vaccination against COVID-19.

ACADEMIC YEAR 2022/2023

Winter semester:

Orientation week: 26 - 27 September 2022

Classes: 29 September 2022 - 07 January 2023

Exam period: 9 January – 10 February 2023

Winter holidays:

22 December 2022 – 1 January 2023

Summer semester:

Orientation week: 6 – 10 February 2023

Classes: 13 February – 20 May 2023

Exam period: 22 May – 30 June 2023

Summer vacation: 1 July – 30 September 2023

GRADING SYSTEM

Local grading scale:

| LOCAL Grade | ECTS Grade | % of successful students normally achieving the grade | Definition |
|-------------|------------|---|--------------------------------|
| 1 | A | 10 | EXCELLENT |
| 1- | B | 25 | VERY GOOD |
| 2 | C | 30 | GOOD |
| 2- | D | 25 | SATISFACTORY |
| 3 | E | 10 | SUFFICIENT |
| 4 | FX | - | FAIL |
| | F | | FAIL |
| P | | | PASSED the test |
| F | | | FAILED the test |
| HC | | | HAS NOT COMPLETED the test yet |

ECTS credits:

1 full academic year = 60 credits

1 semester = 30 credits

Institutional grading system:

Basic principles of credit system of the Faculty of Health and Social Studies of the University of South Bohemia:

- Every single subject (1S course) is graded by a certain number of credits, which indicates how demanding the subject is. These credits students obtain by accomplishing all the conditions the particular chair appointed.
- Standard study pace is 30 credits a semester. Minimum required number of credits per semester is 20 credits to be accepted for the next study year.
- Students are given the credits for their performances in tests (written form) or the exams (spoken form). Spoken form of examination is being graded according to the local grade scale described in the box below.
- Tests (written form) are often marked by passed or failed (P or F) marks and are not being marked according to the scale. Minimum requirements to pass the tests are given by the particular chair.

STRUCTURE OF HIGHER EDUCATION IN CZECH REPUBLIC

Higher education is provided by university type and non-university type institutions. The non-university higher education institutions mainly offer Bachelor study programmes. Higher education is the highest level of the education system. Since 2001 the three cycle structure has strictly been implemented in higher education (i.e. Bachelor's, Master's and Doctoral study programmes). Higher education institutions offer courses in the Humanities, Social Sciences, Natural Sciences, Engineering, Medicine and Pharmacy, Theology, as well as in Economics, Veterinary Medicine, and Agriculture, Teacher Training and Arts. The majority of higher education institutions are public institutions. There are also private higher education institutions. Public institutions are financed by the state budget by the Ministry of Education, Youth and Sports. The private higher education institutions could be partially financed by the State. In addition, the Czech higher education system includes 4 state higher education institutions. There are three military higher education institutions and a Police Academy. These institutions are financed by the Ministry of Defence and the Ministry of the Interior. All higher education institutions provide accredited study programmes which are assessed by the Accreditation Commission. Important partners of the Ministry of education in all decisions concerning higher education are the Czech Rectors' Conference and the Council of Higher Education Institutions. The main tuition language is Czech, however the range of programmes delivered in foreign languages (mainly in English) is expanding in order to cater for international students.

University level studies:University level first stage: Bachelor studies (Bc. = "Bakalar"):

Bachelor study programmes are 3 to 4 years in duration (180–240 ECTS credits), covering all main disciplines, except in Medicine, Veterinary Medicine, Pharmacy, Architecture and Law. It is conceived either as an independent course whose graduates are fully qualified for particular professions or as the first stage of longer studies whose graduates can continue towards the Magistr degree. This cycle leads to the academic degree of "Bakalar" (Bc.) or "Bakalar umeni" (BcA.) in the field of Arts which was introduced in January 1999. Students must sit for a final state examination, part of which is also the defence of the Bachelor thesis. Successful graduates may enter the labour market or continue their studies in follow-up Master's programmes in related fields.

University level second stage: Master studies (Mgr. = "Magistr"):

Master study programmes may either follow on from bachelor programmes as follow-up Master's programmes (2 to 3 years; 60–180 ECTS credits), or they may be full programmes (4 to 6 years; 240–360 ECTS credits). Programmes focus on the acquisition and application of theoretical knowledge, and on the development of creativity and talent. Graduates in Master's programmes have to take a final state examination and publicly present and defend a thesis.

Studies in Master's programmes result in the following degrees:

- magistr (Mgr.): Master of Humanities, Sciences, Law, Education, Pharmacy and Theology
- magistr umění (MgA.): Master of Arts
- inženýr (Ing.): Engineer in the field of Economics, Technical Sciences and Engineering, Agriculture, Forestry and Military branches of study
- inženýr architekt (Ing. arch.) – Engineer in the field of Architecture;
- doktor medicíny (MUDr.): Doctor of Human Medicine
- zubní lékař (MDDr.): Doctor of Dental Medicine
- doktor veterinární medicíny (MVDr.): Doctor of Veterinary Medicine

Holders of a "magistr" Master's degree can sit a demanding state examination in the same field, and present and defend a rigorous thesis. Upon successful completion the following academic degrees are awarded:

- doktor práv (JUDr.): Doctor in the field of Law
- doktor filozofie (PhDr.): Doctor in the field of Humanities, Teacher Training and Social Sciences
- doktor přírodních věd (RNDr.): Doctor in the field of Natural Sciences
- doktor farmacie (PharmDr.): Doctor in the field of Pharmacy
- licenciát teologie (ThLic.): in the field of Catholic Theology
- doktor teologie (ThDr.): Doctor in the field of Theology, excluding Catholic Theology

University level third stage: Doctoral studies: (Dr. = "Doktor"):

The third and highest level of higher education consists in studies for the Doctorate which takes place under the guidance of a tutor. The programme is aimed at scientific research and independent study. Holders of the Master's Degree may apply. Studies last for three years (four to five years part-time) and lead to the academic degree of Doktor (PhD) or "Doktor Teologie" (Th.D.) in the field of Theology. Studies end with the State Doctorate examination and the defence of a dissertation.

Doctoral programmes (which normally last 3 years) are intended for graduates from Master's programmes and focus on independent creative work in research, development or the arts. Doctoral studies are completed by way of a state doctoral examination and the public presentation and defence of a doctoral thesis (dissertation) based on original work, which must be published.

Graduates of Doctoral study programmes are awarded the academic degree of:

- doktor (Ph.D.)
- doktor teologie (Th.D.) in the field of Theology

At some higher education institutions and institutes of the Academy of Sciences, studies leading to the award of the "Kandidat ved" (Candidate of Science, abbreviated as "CSc") still exist. Participants in these programmes may complete their education and finish the defence of their dissertation by 31 December 2001. The degree "Doktor ved" (Doctor of Science as "DrSc") is the highest scientific degree. It is awarded on the basis of original research work and the public defence of the Doctorate thesis.

USEFUL AND INTERESTING WEB-PAGES

General Information

[The Czech Republic](#)

[Discover Czech Itinerary Planner](#)

[Town České Budějovice](#)

Information about the University

[University of South Bohemia](#)

[Faculty of Health and Social Sciences](#)

[University Dormitory and Canteen](#)

Transport

[Prague Airport](#)

[Prague Tube](#)

[Public transport in Prague](#)

[Public transport in České Budějovice](#)

[National timetable IS](#)

FREE TIME

Swimming Pool

Fitness, 50m long swimming pool, diving pool, toboggan, sun beds, steam, Jacuzzi, swimming lessons.

Address: Sokolský ostrov 4, 370 01 České Budějovice
tel.: +420 387 949 411

Opening hours:

Monday and Saturdays: 10:00 - 21:45

Tuesday – Friday 07:00 – 21:45

Saturdays: 10:00 - 20:45

Sundays and Bank holidays: 10:00 - 19:45



Fitness “Pouzar”

Address: Dlouhá 35,
370 11 České Budějovice
tel.: +420 385 343 621



Ice Hockey stadium

Address: F.A.Gerstnera 8/7,
370 01 České Budějovice
tel.: +420 386 107 111

